

A woman with braided hair, wearing a blue and black athletic top, is shown in profile against a sunset background. The scene is bathed in the warm, golden light of the setting sun, with a gradient from orange to blue in the sky.

LIFEWAVE[®]

HEALTH & WELLNESS PRODUCTS

LIVE LONG · LIVE WELL · LIVE YOUNG

A note from
LifeWave Founder and CEO

David Schmidt



While it's true that you only get one precious life, it's also true that there are many ways to make yours long and meaningful. If you can dream big, just about anything is possible, and we believe LifeWave is a wonderful place to start.

With a primary focus on helping people around the world live healthier, more personally enriching lives, we've been making dreams come true since 2004. And it all begins with natural wellness products that help people look and feel their very best.

But our products can also become the foundation for owning and running a successful LifeWave business on your terms. With unmatched flexibility, you can work a few hours a week or dedicate more time depending on your personal goals and availability

So, no matter what path you choose with LifeWave, I encourage you to join our global community and live your one precious life to the fullest. Begin your journey today.

Live Long. Live Well. Live Young.

Sincerely,

A handwritten signature in blue ink that reads "David". The script is fluid and cursive.

Founder and CEO

ABOUT LIFEWAVE

OUR MISSION

We are committed to helping people live long and live well with health and wellness solutions designed to redefine the future of human potential.

WHO WE ARE

Driven by innovation and proven by science, LifeWave is a breakthrough life technology company dedicated to honoring the light of life.

As we began thinking differently about light and the possibilities of phototherapy, we were inspired to explore the potential of earth's oldest natural resource. With a noninvasive wearable patch, we discovered a way to harness visible and infrared light and tap into the body's natural energy reserves.

OUR PURPOSE

Beyond helping people find a healthier way to live, LifeWave's purpose is to empower people to live in the light with life technology. It begins with natural energy and the ability to get out and move your body. Faster recovery, improved performance, and prolonged activity contribute to a healthier lifestyle. This creates a wellness connection of mind, body, and spirit, which improves so much more than just physical health.

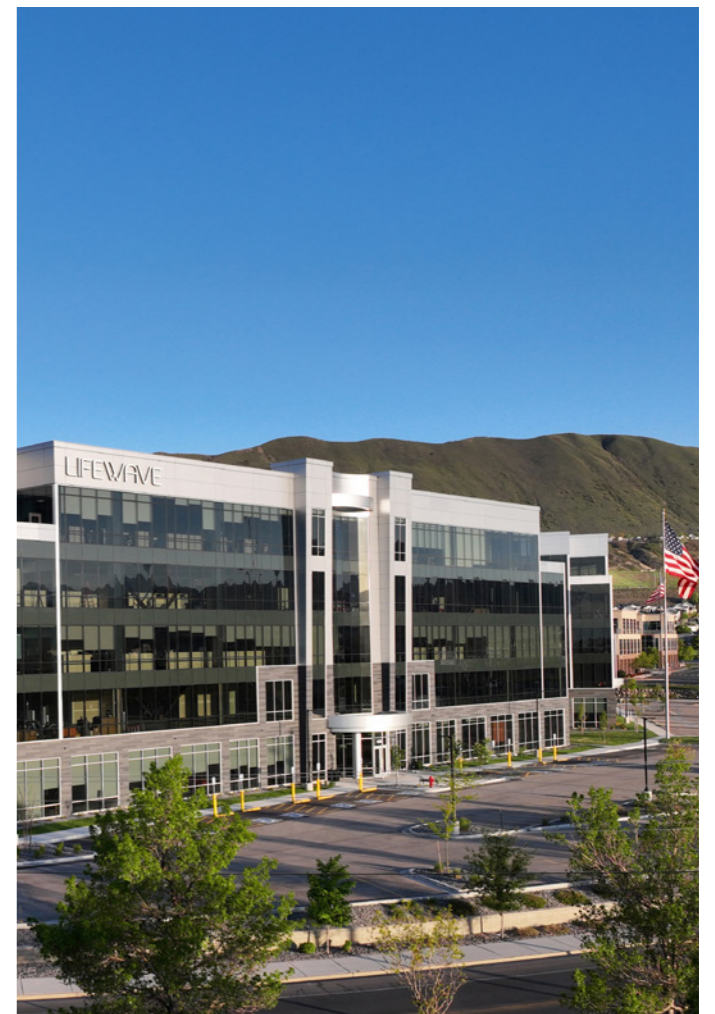
OUR FACILITIES

At LifeWave, we're proud to manufacture our patches in our own facilities. This direct oversight allows us to maintain complete control over the production process, ensuring precision, consistency, and exceptional quality in every patch we make.

DIRECT SELLING: A WORLD OF OPPORTUNITY

Often referred to as the original social network, direct selling has been a proven business model for over a century. In fact, hundreds of direct selling companies, many of them household names, help people around the world find the freedom and independence they've always wanted.

But perhaps what's most important is that anyone, regardless of their background, can start his or her own LifeWave business and quickly hit the ground running.



That's because we handle the challenges that prevent many people from making it on their own:

- Manufacturing of exclusive, breakthrough products
- Providing top-notch marketing support
- Thorough, caring Customer Service support
- Timely, accurate order fulfillment
- Dynamic worldwide events to educate, inspire, and motivate
- A dedicated Sponsor providing ongoing support and a proven roadmap for success



20 YEARS OF PRODUCT INNOVATION

CONTINUED PRODUCT INNOVATION

When LifeWave began back in 2004, even the most optimistic of projections fell short of our reality nearly 20 years later.

In addition to the millions of people who have benefited from our patented life technology, countless more have felt the embrace of the worldwide LifeWave community, experienced the lasting impact of greater financial opportunity, or received a helping hand as part of LifeWave's commitment to humanitarian advancement.

And it all began when, as a young boy, David's parents took him to visit the workshop of Thomas Edison. From that day forward, David knew he wanted to be an inventor—even more than that, he knew he wanted to change the world.

SCIENCE + INNOVATION

David fueled his entrepreneurial endeavors by combining the reality of science with the imagination of innovation. Harnessing

light, he discovered a life-transforming patch technology that reflects visible and infrared light back into the tissue. That initial patch is now known as Energy Enhancer®. In 2002, a patent was filed on this pioneering, non-transdermal technology.

Two decades later, LifeWave's incredible line of wearable wellness life technology and accompanying products are sold in over 100 countries across the globe.

Since the genesis of LifeWave's first Energy Enhancer® patch, we have gone on to develop additional patches that provide life-changing benefits.

LIVE LONG, LIVE WELL, LIVE YOUNG WITH LIFEWAVE

LifeWave is continuously surpassing product innovation and business success milestones and continues to experience record-breaking sales year after year.

With its global headquarters in the United States, LifeWave now has offices in Ireland, Mexico, Canada, Taiwan, Philippines, Japan, Malaysia, Thailand, South Korea, Singapore and Indonesia, with continued infrastructure growth and market expansion expected. After two-decades, LifeWave is on a growth trajectory as ambitious as that momentous day back in 2004 when David's boyhood dream became a reality.

LifeWave isn't just changing the health and wellness

industry, but the reality of technology and the future of human potential.

LIFEWAVE PATCHES



WHAT THEY DO:

Our general wellness patches use our unique patented technology to provide numerous health benefits.

RECOMMENDED FOR:

Anyone seeking a balanced approach to better health.

HOW THE PATCHES WORK AND BENEFIT YOU:

Our patches put no drugs or stimulants in your body. Instead, each patch stimulates specific points on the skin that can promote a overall health and well-being, with each LifeWave patch offering unique benefits.



All LifeWave Products are **free from drugs, and stimulants.**

LIVE LONG



LifeWave X39®

New technology stimulates the skin with low levels of light, resulting in improved energy flow. Supports improvements in strength and stamina.



LifeWave X49®

Promotes performance, strength, stamina and recovery.

LIVE WELL



Icewave®

Designed to support your body with no drugs, no stimulants, and no compromises. Fast action, convenient and easy to use.



Energy Enhancer®

Promotes the flow of energy in the body and supports your physical fitness routine.



Silent Nights®

Gently nurtures restfulness, which cultivates restorative sleep.



SP6® Complete

Promotes a mindful approach to maintaining a healthy appetite.



Y-Age Aeon®

Designed to help you relax and manage stress.



Y-Age® Glutathione

Improves skin's appearance and helps promote relaxation and reduces stress.



Y-Age® Carnosine

Helps promote exercise and physical fitness as part of your wellness routine.

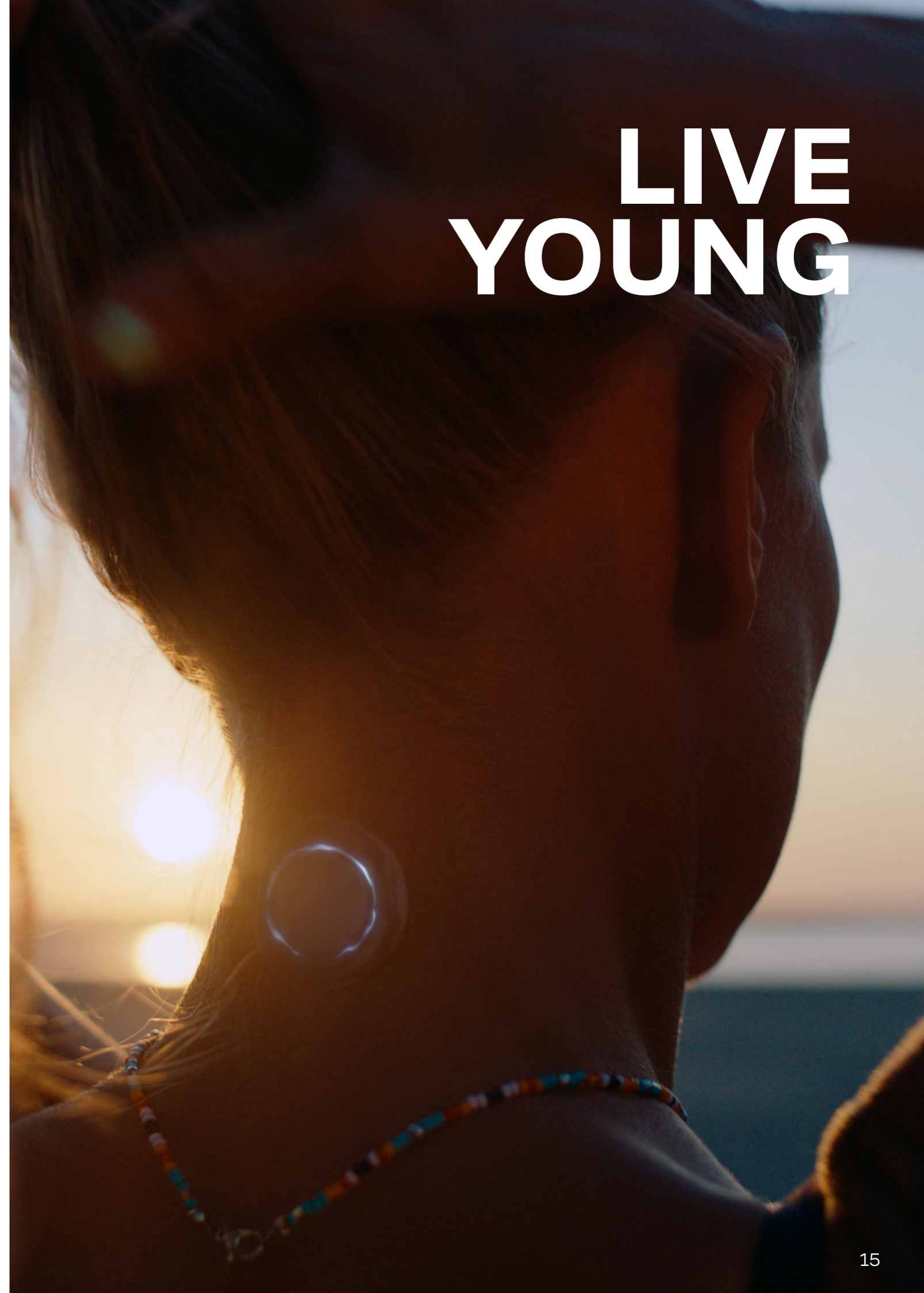


AcuLife®

Promotes a soothing effect, helps maintain normal flexibility and may help reduce discomfort.

**For Horses / not intended for human use*

LIVE YOUNG





ALAVIDA® Collection **Improves** the health of your skin from the inside out.



Alavida® Revive Eye Cream

Improves the appearance of even skin tone, and supports the appearance of firm skin.*



Alavida® Patches

Balances your body's natural restorative energy to improve the healthy and radiant appearance of your skin.*



Alavida® Nightly Restore Facial Creme

Supports overnight protection of your skin to reduce the appearance of fine lines and wrinkles, brighten complexion, and even out skin tone.*

Alavida® Daily Refresh Facial Nectar

Supports protection of your skin, while improving radiance and appearance with daily application.*

Alavida skincare products are subject to market availability. Please visit www.lifewave.com to check what products are available in your country

Combine individual Alavida products with the with Alavida Regenerating System for best results.

*When used in conjunction with the Alavida Regenerating system

CELLERGIZE MORNING



Start Strong Power On.

Set the pace for the day ahead. Introducing Cellergize Morning, made for you to create a foundation of living well every day. An energizing blend of essential vitamins, minerals, and amino acids, Cellergize Morning revitalizes your body, sparks ambition, and boosts results. Packed with a dynamic blend of ingredients, it's your go-to boost for feeling refreshed, motivated, and ready to conquer whatever comes your way. Flavored with lemon and ginger, this refreshing morning wellness supplement includes sea buckthorn fruit extract, which supports healthy stem cell activity.* Supercharge your results with the complementary benefits of LifeWave's powerful patch technology.

PRODUCT BENEFITS:

- Supports healthy stem cell activity*
- Utilizes ingredients known to support health and vitality of human cells*
- Provides nutrients known to support overall health and wellness*
- Designed with a blend of key ingredients to revitalize your wellbeing*
- Complements LifeWave's line of non-transdermal patches*

PRODUCT FEATURES:

- No artificial sweeteners, flavors or colorings*
- Non-GMO*
- Gluten free *

*These statements have not been evaluated by the Food and Drug Administration. This product is not intended to diagnose, treat, cure, or prevent any disease.

Power down. Rest easy

Cellergize Evening a premium nighttime supplement designed to help your body power down, reset, and drift into deep, restorative rest.*

With a calming blend of L-theanine, taurine, magnesium, and nattokinase, this gentle formula contains ingredients that support relaxation in preparation for sleep, overall wellness, and pairs perfectly with our line of non-transdermal patches.*

Featuring a smooth honey-lavender flavor, Cellergize Evening turns your everyday wind-down routine into a soothing self-care ritual you'll look forward to night after night.

PRODUCT BENEFITS:

- Formulated with thoughtfully selected ingredients to complement your nighttime routine*
- Crafted with ingredients to support relaxation*
- Supports your journey towards a balanced lifestyle*
- Complements LifeWave's line of non-transdermal patches*

PRODUCT FEATURES:

- No artificial sweeteners, flavors or colorings.
- Contains: Soy

CELLERGIZE EVENING



We're Here

To Help Our Brand Partners Succeed

“What is it that you plan to do with **your** one wild and precious life?”



Our Full Range of Support Includes

- ✓ *Customer Service*
- ✓ *Order Fulfillment*
- ✓ *Training Videos*
- ✓ *Webinars*
- ✓ *An online Back Office*
- ...and more

Finally, you'll sign up under a dedicated Sponsor who supports you every step of the way and provides a proven roadmap for success.

JOIN US

DISCOVER THE REWARDS OF LIVING WELL

The LifeWave story is one you'll want to tell anyone in search of a more balanced and fulfilling life. For many, sharing this story can lead to earning supplemental or extra income. Others love sharing our products because of the many health benefits they provide.

Whatever path you choose, we would love to have you join us as a LifeWave Brand Partner. You'll have the advantage of marketing products you believe in. And in the process, you'll be part of a caring, supportive community living a lifestyle of wellness unlike any other.

To view the full [Earnings Disclosure document](#), go to [BO Resources > Account Management > Earning Disclosure Statement](#). LifeWave products are for general wellness and intended only to maintain or encourage a general state of health or a healthy activity. The content provided by LifeWave is presented in summary form, is general in nature, and is provided for informational purposes only. Always consult with your physician or other qualified health care provider before embarking on a new health regimen, diet or fitness program. Do not disregard any medical advice you have received or delay in seeking it. LifeWave reserves the right to change product prices or selection.



LIVE LONG. LIVE WELL. LIVE YOUNG.

For more information on LifeWave, please contact:



LifeWave Inc., 13893 Minuteman Drive, Suite 500, Draper, UT 84020
Tel / Fax: +1 (866)202 0065 | customerservice@lifewave.com | www.lifewave.com

WWW.LIFEWAVE.COM

	File name	- PROD-CAT-US-EN R01	COLOURS USED
	Version	- 1	
	Date	- 28 Jan. 2026	
	Dimensions	- 210W * 297mmH	
	Software	- InDesign 2025	
	Board Type	-	